

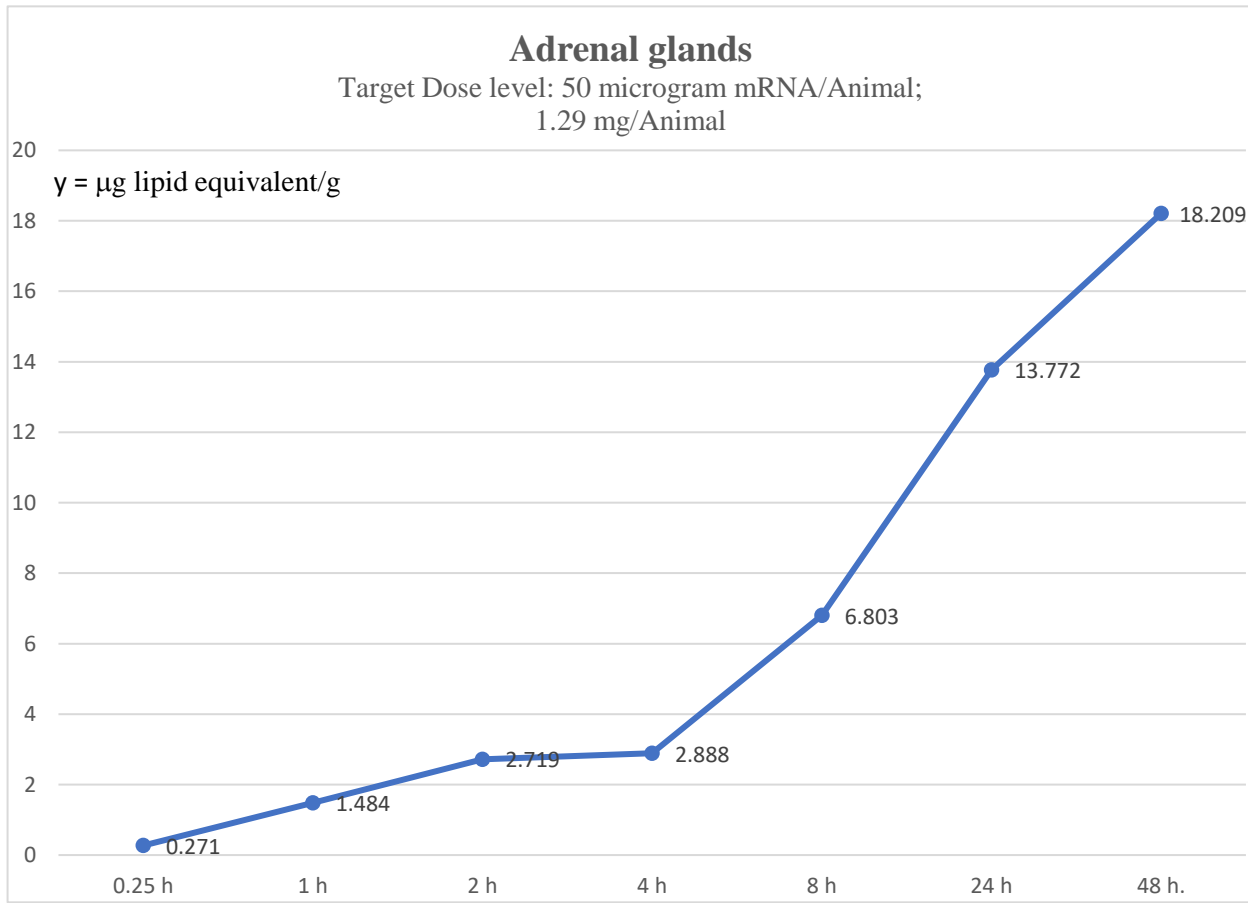
Mean Concentration and Recovery of Total Radioactivity in Whole Blood, Plasmas and Tissues Following Single
IM Administration of [³H]-08-A01-C01 to Wistar Han Rats

	0.25 h	1 h	2 h	4 h	8 h	24 h	48 h.
Adrenal glands	0.271	1.484	2.719	2.888	6.803	13.772	18.209
Bone	0.091	0.195	0.266	0.276	0.34	0.342	0.687
Bone marrow	0.479	0.96	1.237	1.236	1.836	2.492	3.771
Brain	0.045	0.1	0.138	0.115	0.073	0.069	0.068
Heart	0.282	1.029	1.402	0.987	0.79	0.451	0.546
Kidneys	0.391	1.161	2.046	0.924	0.59	0.426	0.425
Large intestine	0.013	0.048	0.093	0.287	0.649	1.104	1.338
Liver	0.737	4.625	10.972	16.547	26.544	19.24	24.288
Lung	0.492	1.21	1.834	1.497	1.151	1.039	1.093
Lymph node (man)	0.064	0.189	0.29	0.408	0.534	0.554	0.727
Lymph node (mes)	0.05	0.146	0.53	0.489	0.689	0.985	1.366
Ovaries	0.104	1.339	1.638	2.341	3.088	5.24	12.261
Pancreas	0.081	0.207	0.414	0.38	0.294	0.358	0.599
Pituitary gland	0.339	0.645	0.868	0.854	0.405	0.478	0.694
Prostate	0.061	0.091	0.128	0.157	0.15	0.183	0.17
Small intestine	0.03	0.221	0.476	0.879	1.279	1.302	1.472
Spinal cord	0.043	0.097	0.169	0.25	0.106	0.085	0.112
Spleen	0.334	2.471	7.734	10.296	22.091	20.08	23.353
Stomach	0.017	0.065	0.115	0.144	0.268	0.152	0.215
Testes	0.031	0.042	0.079	0.129	0.146	0.304	0.32
Thymus	0.088	0.243	0.34	0.335	0.196	0.207	0.331
Thyroid	0.155	0.536	0.842	0.851	0.544	0.578	1
Uterus	0.043	0.203	0.305	0.14	0.287	0.289	0.456
Whole blood	1.97	4.369	5.401	3.049	1.314	0.909	0.42
Plasma	3.965	8.132	8.903	6.503	2.36	1.783	0.805
Injection site	128.253	393.81	311.177	338.039	212.76	194.855	164.929
Blood-plasma ratio	0.815	0.515	0.55	0.51	0.555	0.53	0.54

Expressed as total lipid concentration (microgms lipid equiv/g (mL))

Robert W. Chandler, MD, MBA

Mean Concentration and Recovery of Total Radioactivity in Whole Blood, Plasmas and Tissues Following Single IM Administration of [³H]-08-A01-C01 to Wistar Han Rats



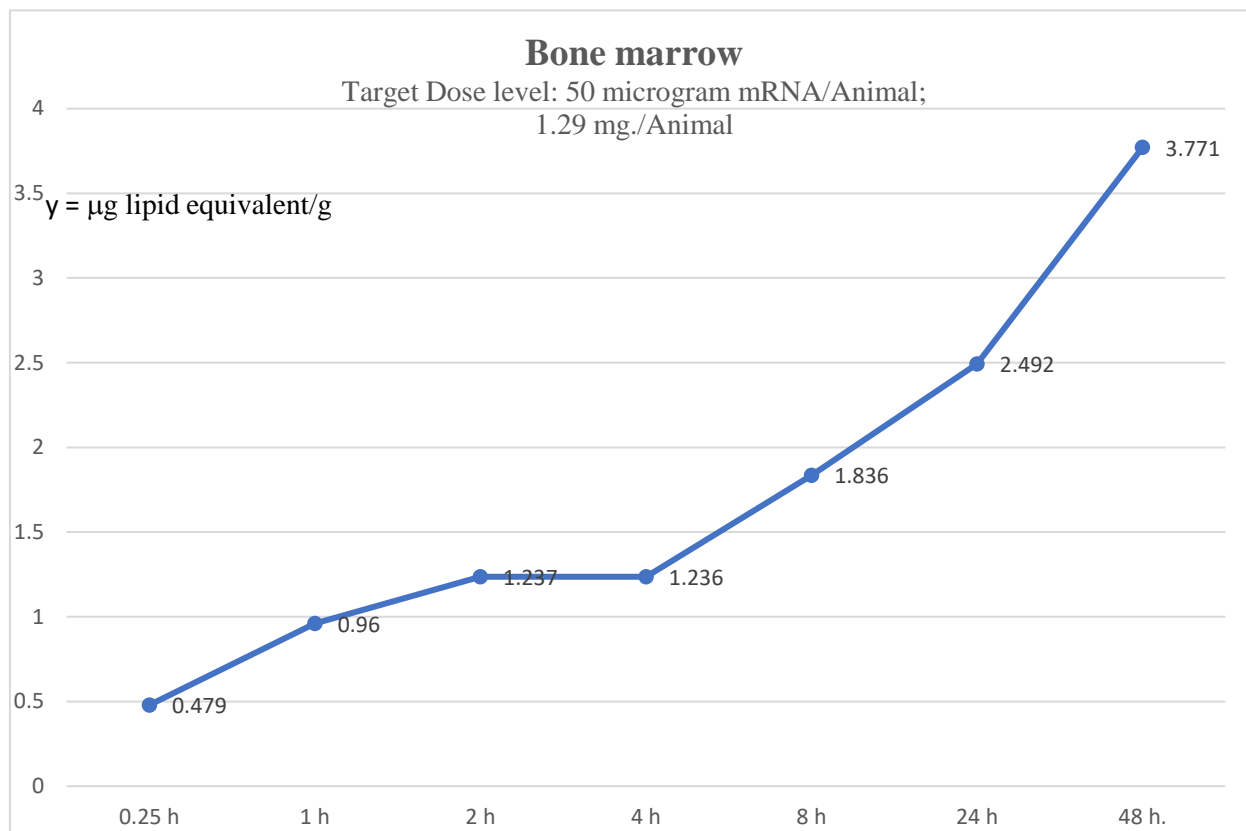
Adrenal glands

0.25 h	1 h	2 h	4 h	8 h	24 h	48 h.
0.271	1.484	2.719	2.888	6.803	13.772	18.209

Expressed as total lipid concentration (microgms lipid equiv/g (mL))

Robert W. Chandler, MD, MBA

Mean Concentration and Recovery of Total Radioactivity in Whole Blood, Plasmas and Tissues Following Single IM Administration of [³H]-08-A01-C01 to Wistar Han Rats



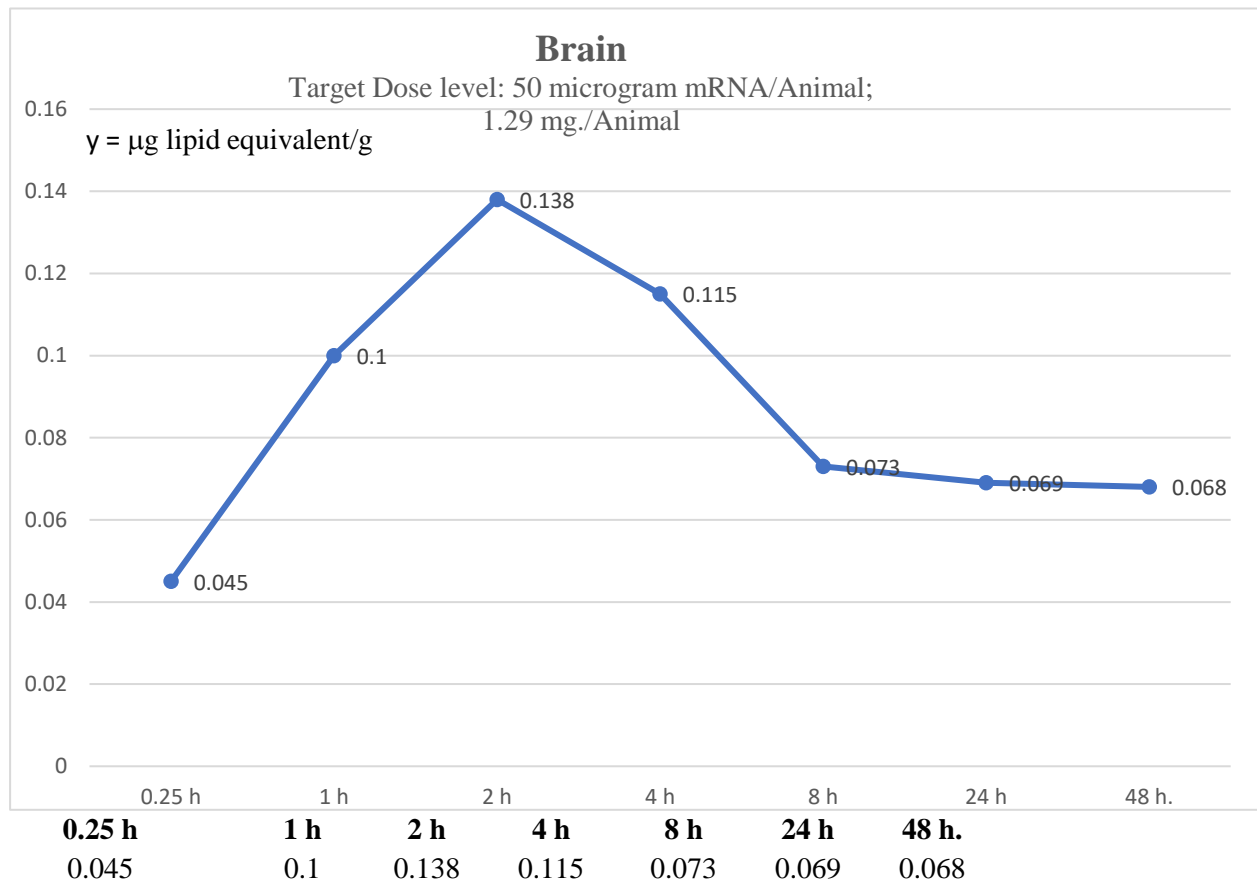
Bone marrow

0.25 h	1 h	2 h	4 h	8 h	24 h	48 h.
0.479	0.96	1.237	1.236	1.836	2.492	3.771

Expressed as total lipid concentration (microgms lipid equiv/g (mL))

Robert W. Chandler, MD, MBA

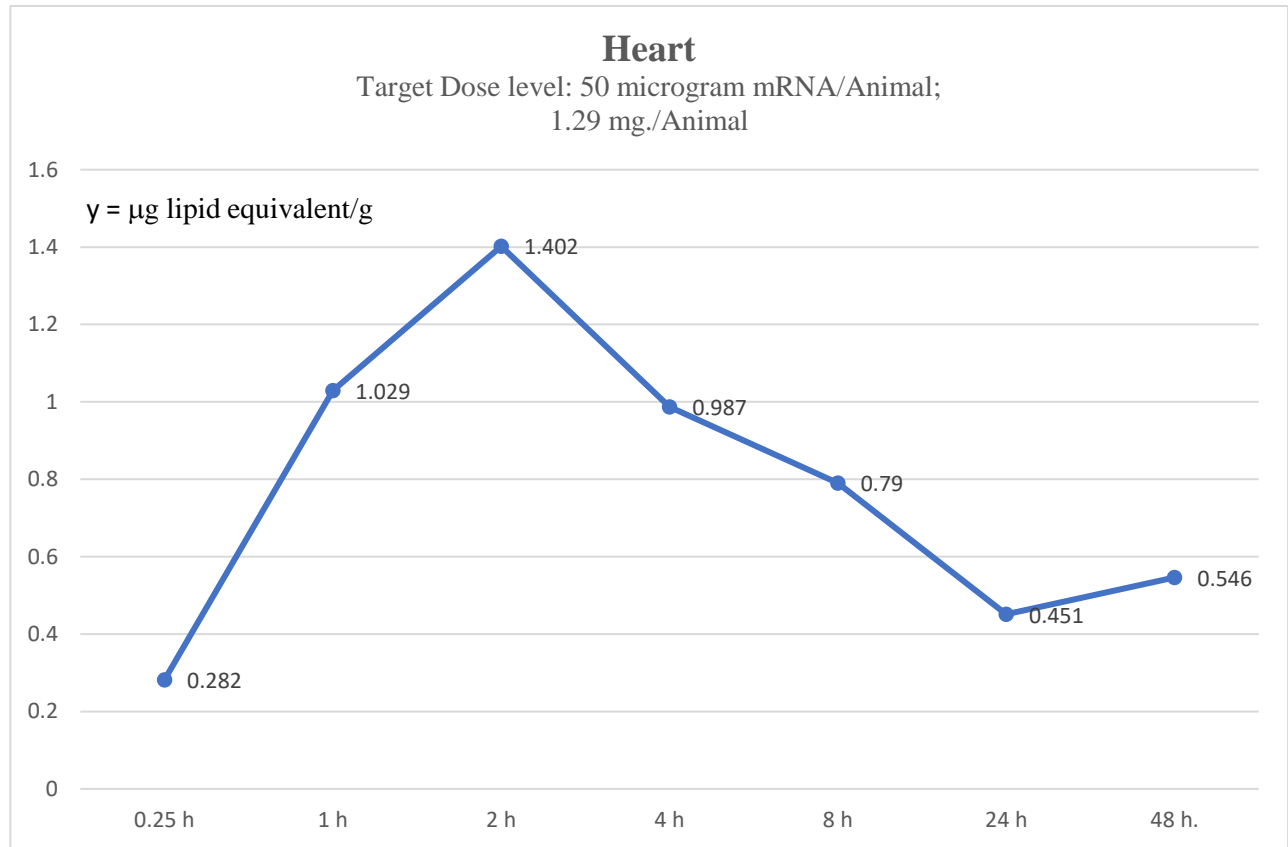
Mean Concentration and Recovery of Total Radioactivity in Whole Blood, Plasmas and Tissues Following Single IM Administration of [³H]-08-A01-C01 to Wistar Han Rats



Expressed as total lipid concentration (microgms lipid equiv/g (mL))

Robert W. Chandler, MD, MBA

Mean Concentration and Recovery of Total Radioactivity in Whole Blood, Plasmas and Tissues Following Single IM Administration of [³H]-08-A01-C01 to Wistar Han Rats



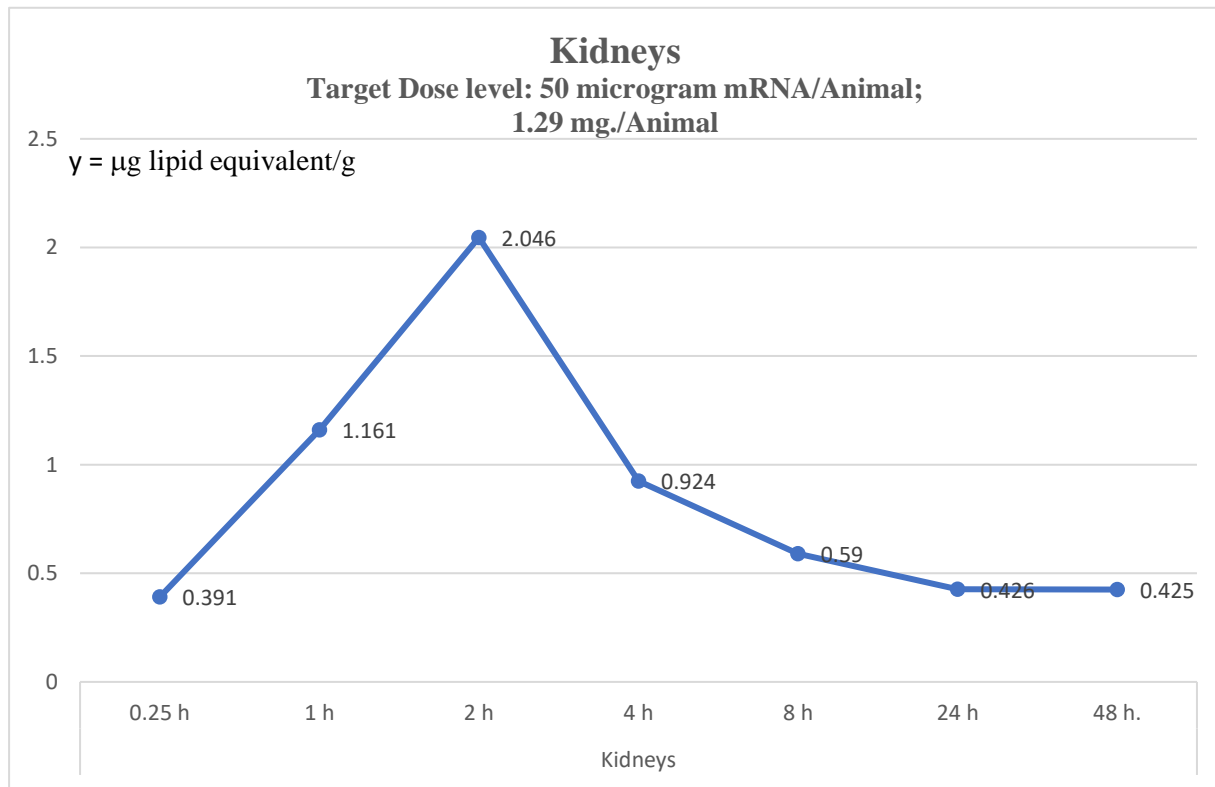
Heart

0.25 h	1 h	2 h	4 h	8 h	24 h	48 h.
0.282	1.029	1.402	0.987	0.79	0.451	0.546

Expressed as total lipid concentration (microgms lipid equiv/g (mL))

Robert W. Chandler, MD, MBA

Mean Concentration and Recovery of Total Radioactivity in Whole Blood, Plasmas and Tissues Following Single IM Administration of [³H]-08-A01-C01 to Wistar Han Rats



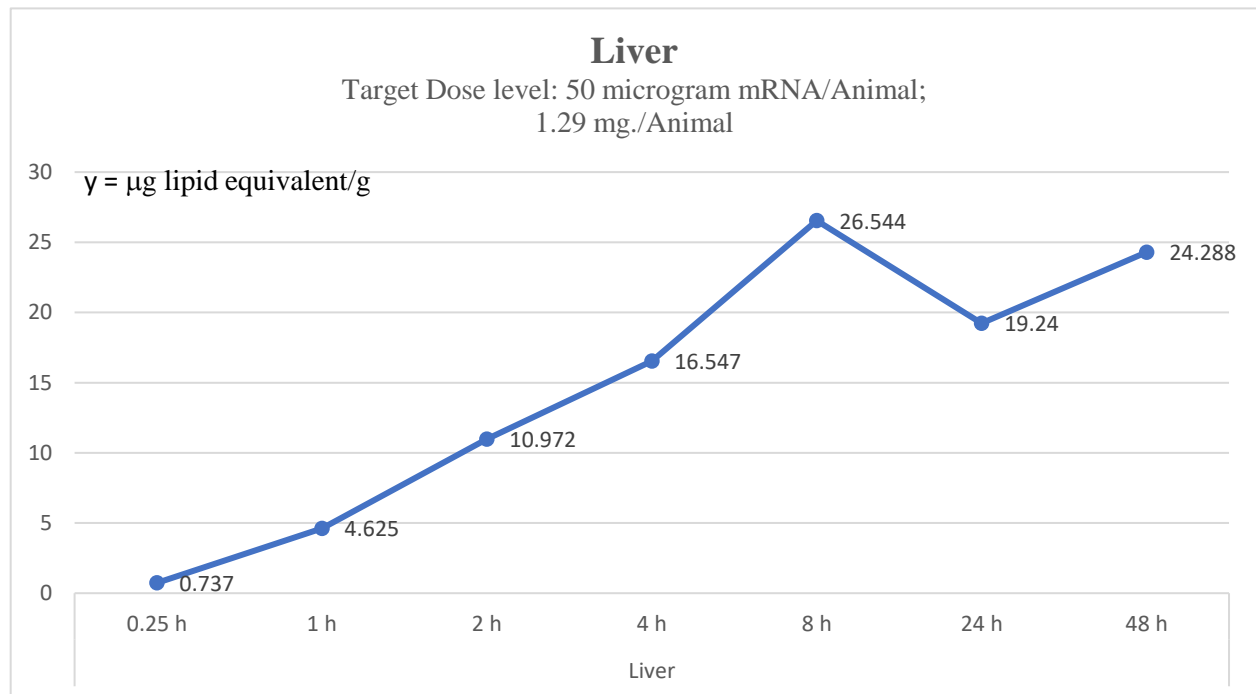
Kidneys

0.25 h	1 h	2 h	4 h	8 h	24 h	48 h.
0.391	1.161	2.046	0.924	0.59	0.426	0.425

Expressed as total lipid concentration (microgms lipid equiv/g (mL))

Robert W. Chandler, MD, MBA

Mean Concentration and Recovery of Total Radioactivity in Whole Blood, Plasmas and Tissues Following Single IM Administration of [³H]-08-A01-C01 to Wistar Han Rats

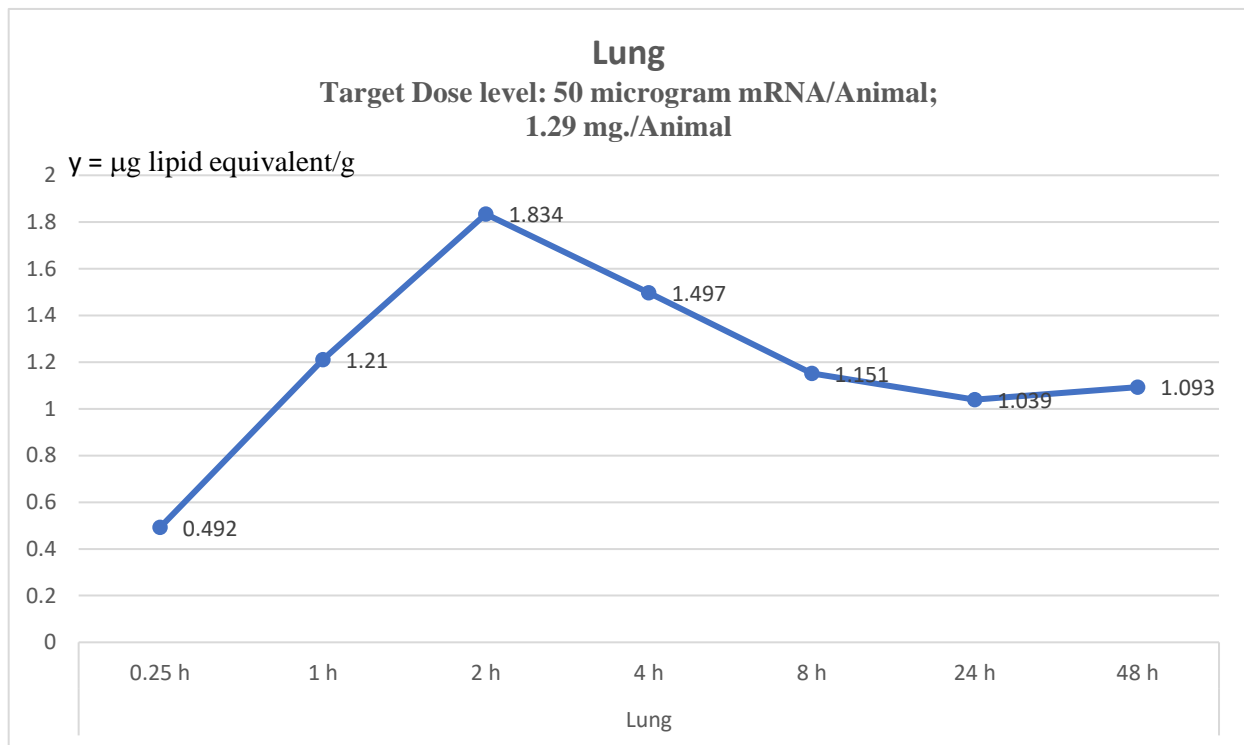


Liver	1 h	2 h	4 h	8 h	24 h	48 h
0.737	4.625	10.972	16.547	26.544	19.24	24.288

Expressed as total lipid concentration (microgms lipid equiv/g (mL))

Robert W. Chandler, MD, MBA

Mean Concentration and Recovery of Total Radioactivity in Whole Blood, Plasmas and Tissues Following Single IM Administration of [³H]-08-A01-C01 to Wistar Han Rats



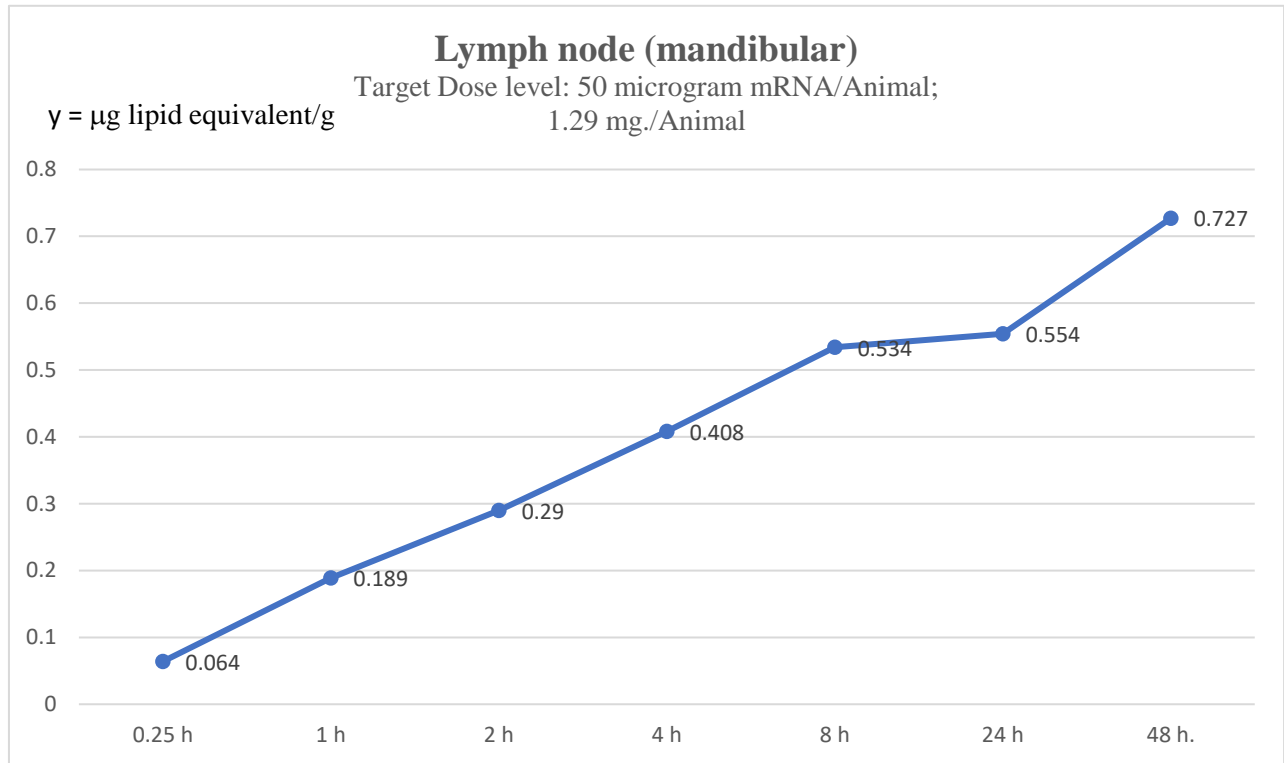
Lung	1 h	2 h	4 h	8 h	24 h	48 h
0.492	1.21	1.834	1.497	1.151	1.039	1.093

Expressed as total lipid concentration (microgms lipid equiv/g (mL))

Robert W. Chandler, MD, MBA

Mean Concentration and Recovery of Total Radioactivity in Whole Blood, Plasmas and Tissues Following Single IM Administration of [³H]-08-A01-C01 to Wistar Han Rats

XY



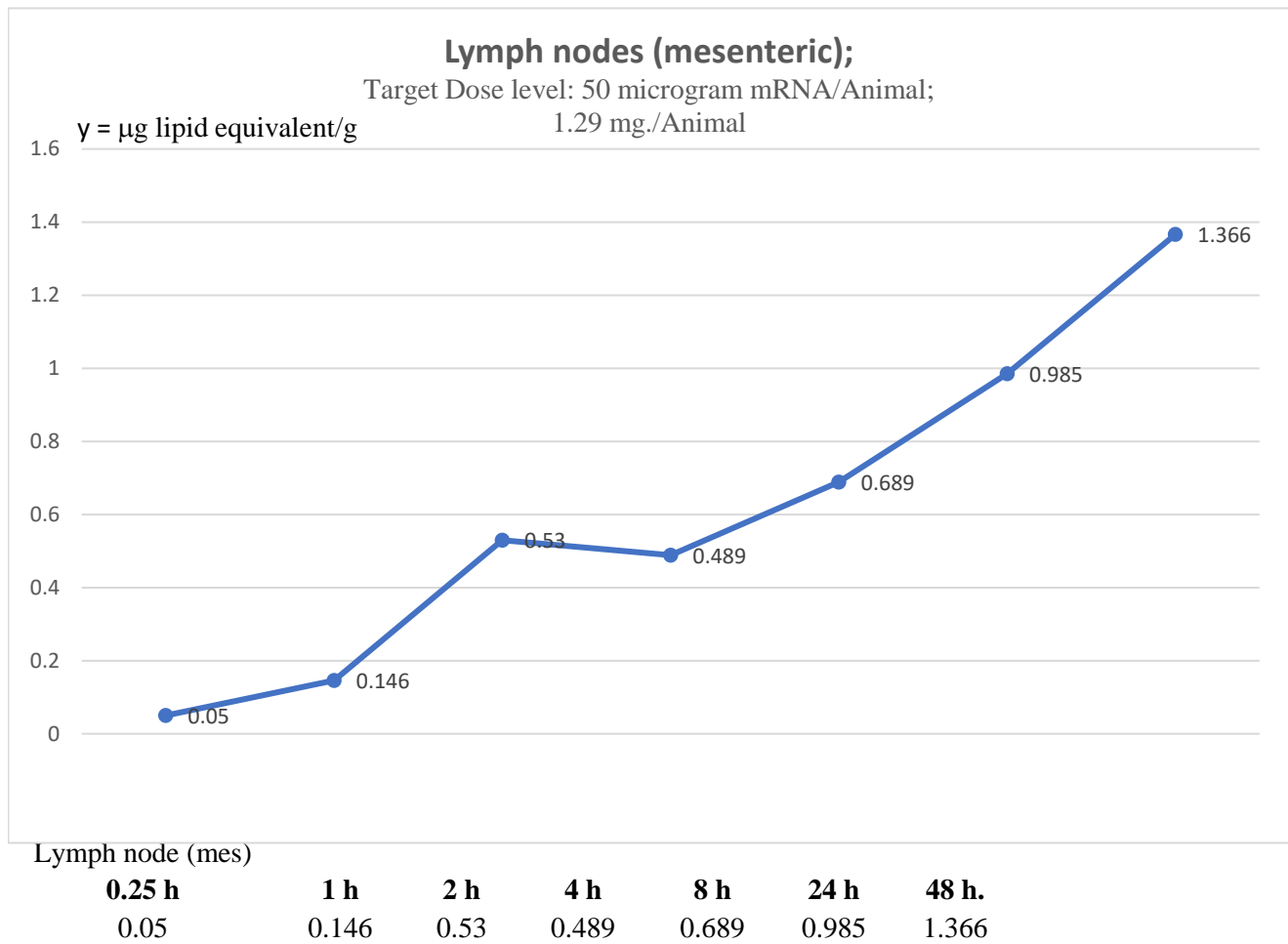
Lymph node (man)

0.25 h	1 h	2 h	4 h	8 h	24 h	48 h
0.064	0.189	0.29	0.408	0.534	0.554	0.727

Expressed as total lipid concentration (micrograms lipid equiv/g (mL))

Robert W. Chandler, MD, MBA

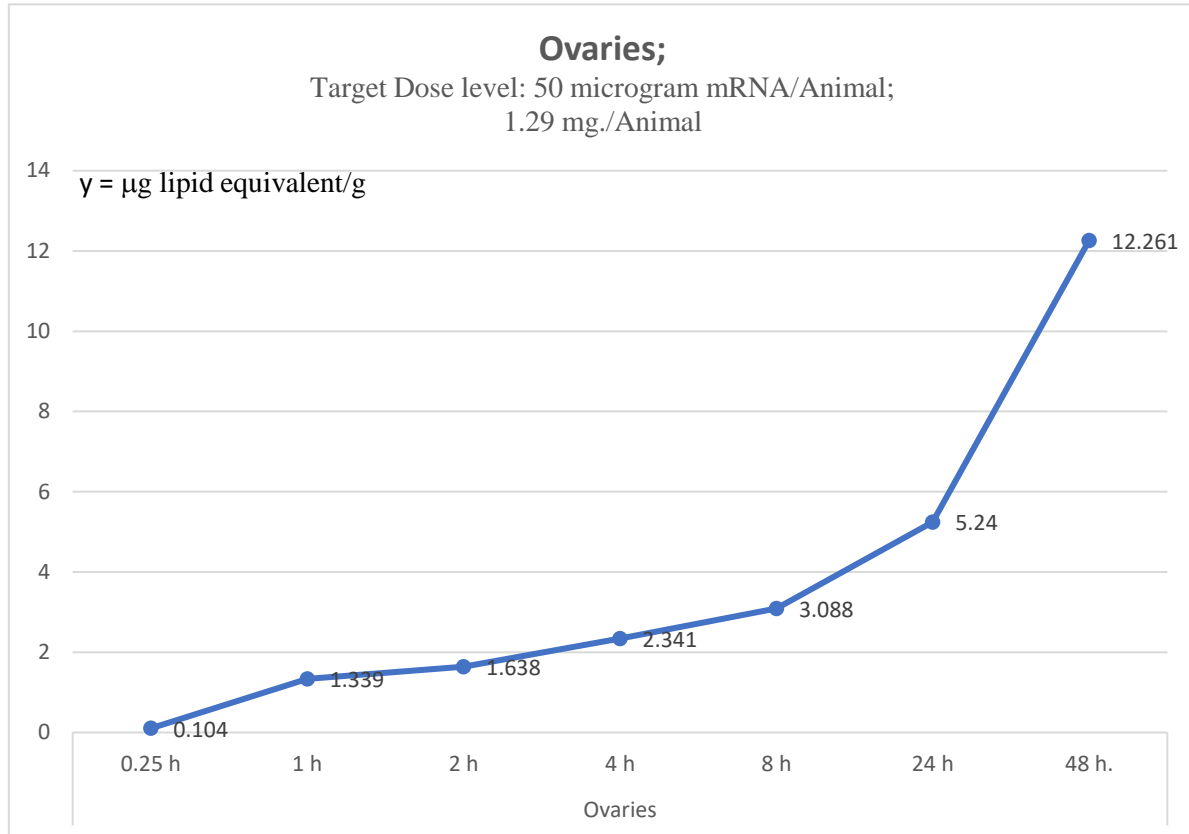
Mean Concentration and Recovery of Total Radioactivity in Whole Blood, Plasmas and Tissues Following Single IM Administration of [³H]-08-A01-C01 to Wistar Han Rats



Expressed as total lipid concentration (micrograms lipid equiv/g (mL))

Robert W. Chandler, MD, MBA

Mean Concentration and Recovery of Total Radioactivity in Whole Blood, Plasmas and Tissues Following Single IM Administration of [³H]-08-A01-C01 to Wistar Han Rats

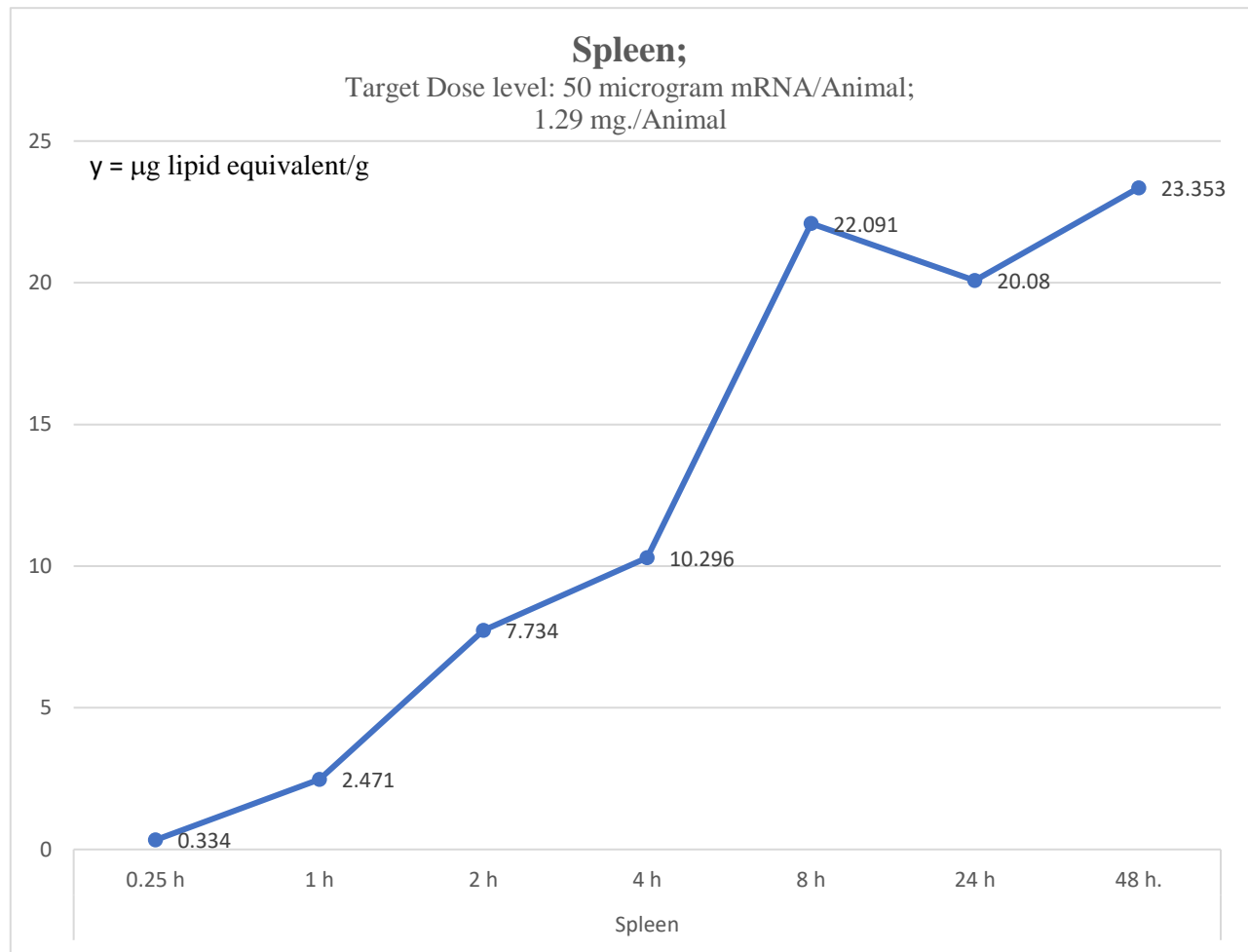


Ovaries						
0.25 h	1 h	2 h	4 h	8 h	24 h	48 h.
0.104	1.339	1.638	2.341	3.088	5.24	12.261

Expressed as total lipid concentration (microgms lipid equiv/g (mL))

Robert W. Chandler, MD, MBA

Mean Concentration and Recovery of Total Radioactivity in Whole Blood, Plasmas and Tissues Following Single IM Administration of [³H]-08-A01-C01 to Wistar Han Rats

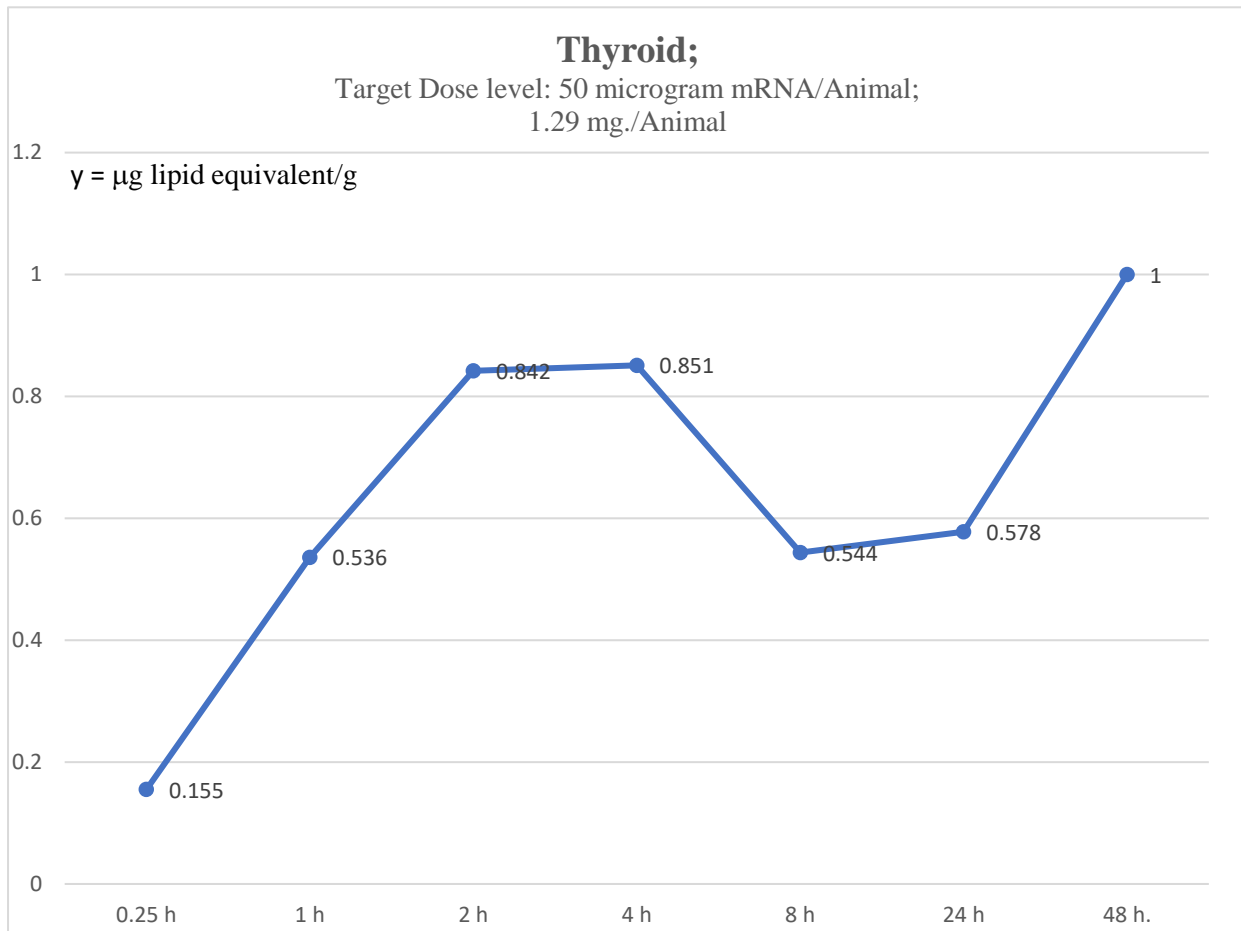


Spleen	1 h	2 h	4 h	8 h	24 h	48 h.
0.334	2.471	7.734	10.296	22.091	20.08	23.353

Expressed as total lipid concentration (microgms lipid equiv/g (mL))

Robert W. Chandler, MD, MBA

Mean Concentration and Recovery of Total Radioactivity in Whole Blood, Plasmas and Tissues Following Single IM Administration of [³H]-08-A01-C01 to Wistar Han Rats

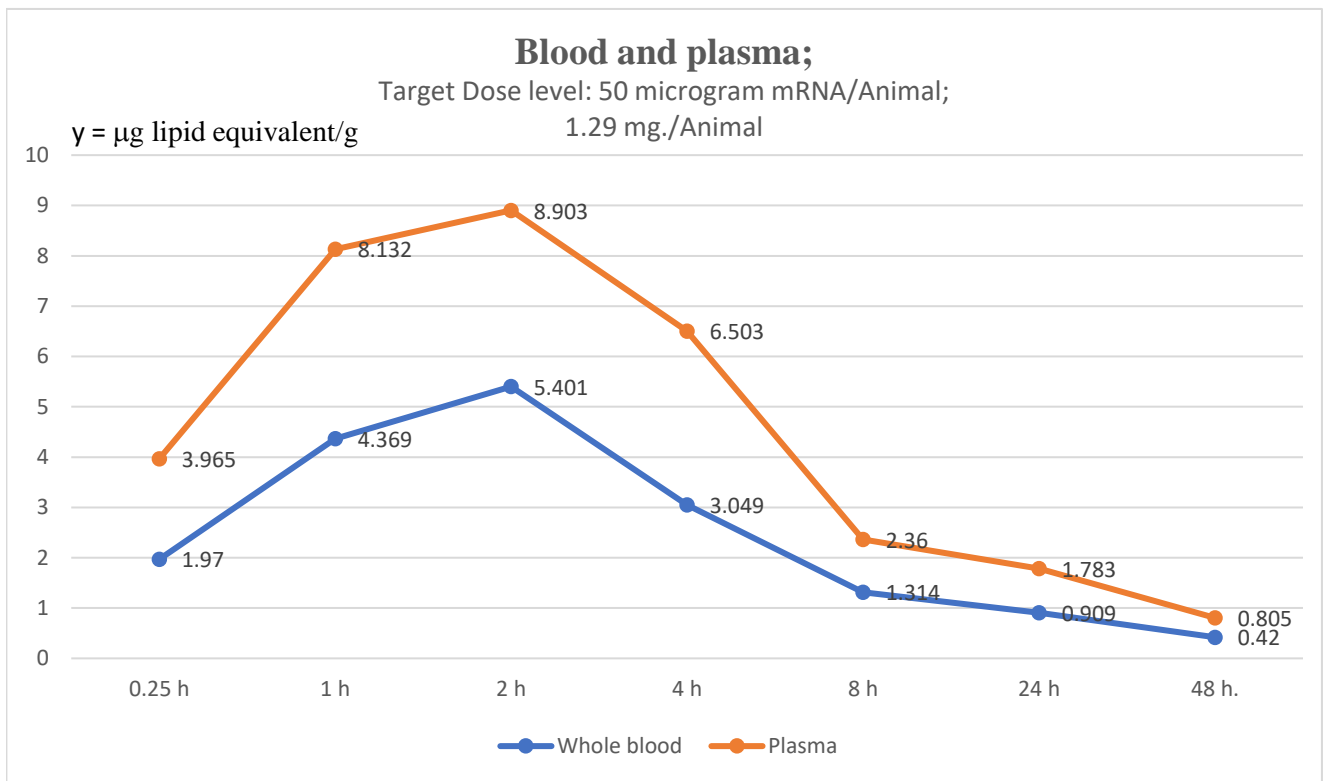


Thyroid						
0.25 h	1 h	2 h	4 h	8 h	24 h	48 h.
0.155	0.536	0.842	0.851	0.544	0.578	1

Expressed as total lipid concentration (microgms lipid equiv/g (mL))

Robert W. Chandler, MD, MBA

Mean Concentration and Recovery of Total Radioactivity in Whole Blood, Plasmas and Tissues Following Single IM Administration of [³H]-08-A01-C01 to Wistar Han Rats

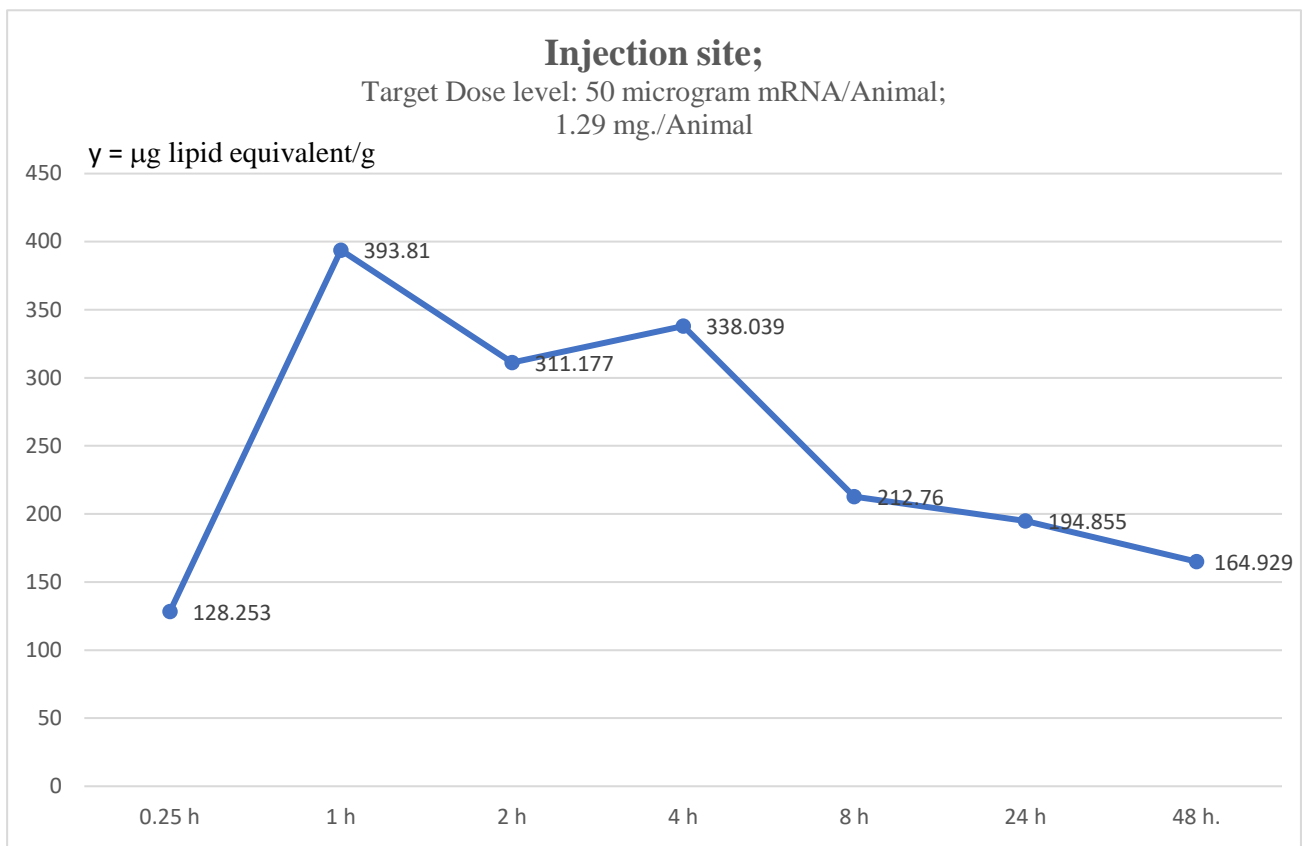


	0.25 h	1 h	2 h	4 h	8 h	24 h	48 h.
Whole blood	1.97	4.369	5.401	3.049	1.314	0.909	0.42
Plasma	3.965	8.132	8.903	6.503	2.36	1.783	0.805

Expressed as total lipid concentration (microgms lipid equiv/g (mL))

Robert W. Chandler, MD, MBA

Mean Concentration and Recovery of Total Radioactivity in Whole Blood, Plasmas and Tissues Following Single IM Administration of [³H]-08-A01-C01 to Wistar Han Rats

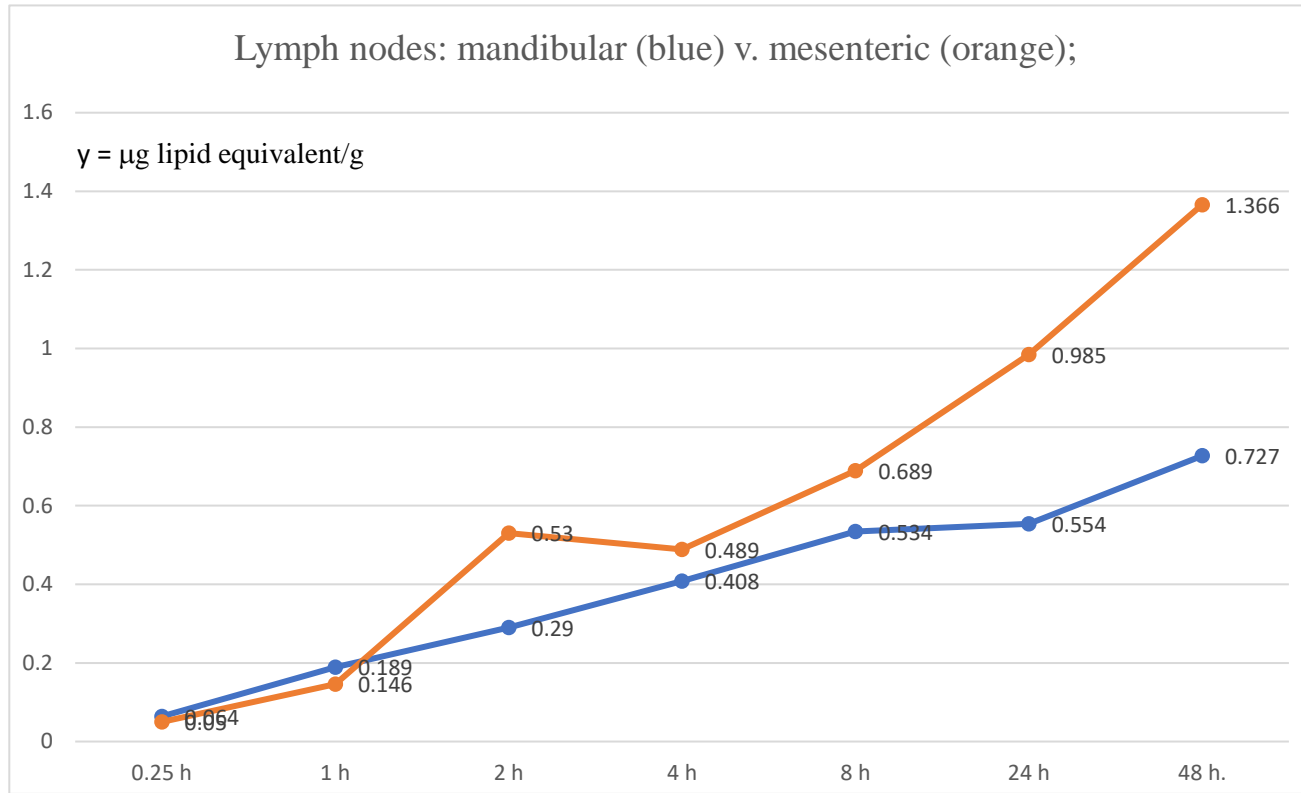


	0.25 h	1 h	2 h	4 h	8 h	24 h	48 h.
Injection site	128.253	393.81	311.177	338.039	212.76	194.855	164.929

Expressed as total lipid concentration (microgms lipid equiv/g (mL))

Robert W. Chandler, MD, MBA

Mean Concentration and Recovery of Total Radioactivity in Whole Blood, Plasmas and Tissues Following Single IM Administration of [³H]-08-A01-C01 to Wistar Han Rats

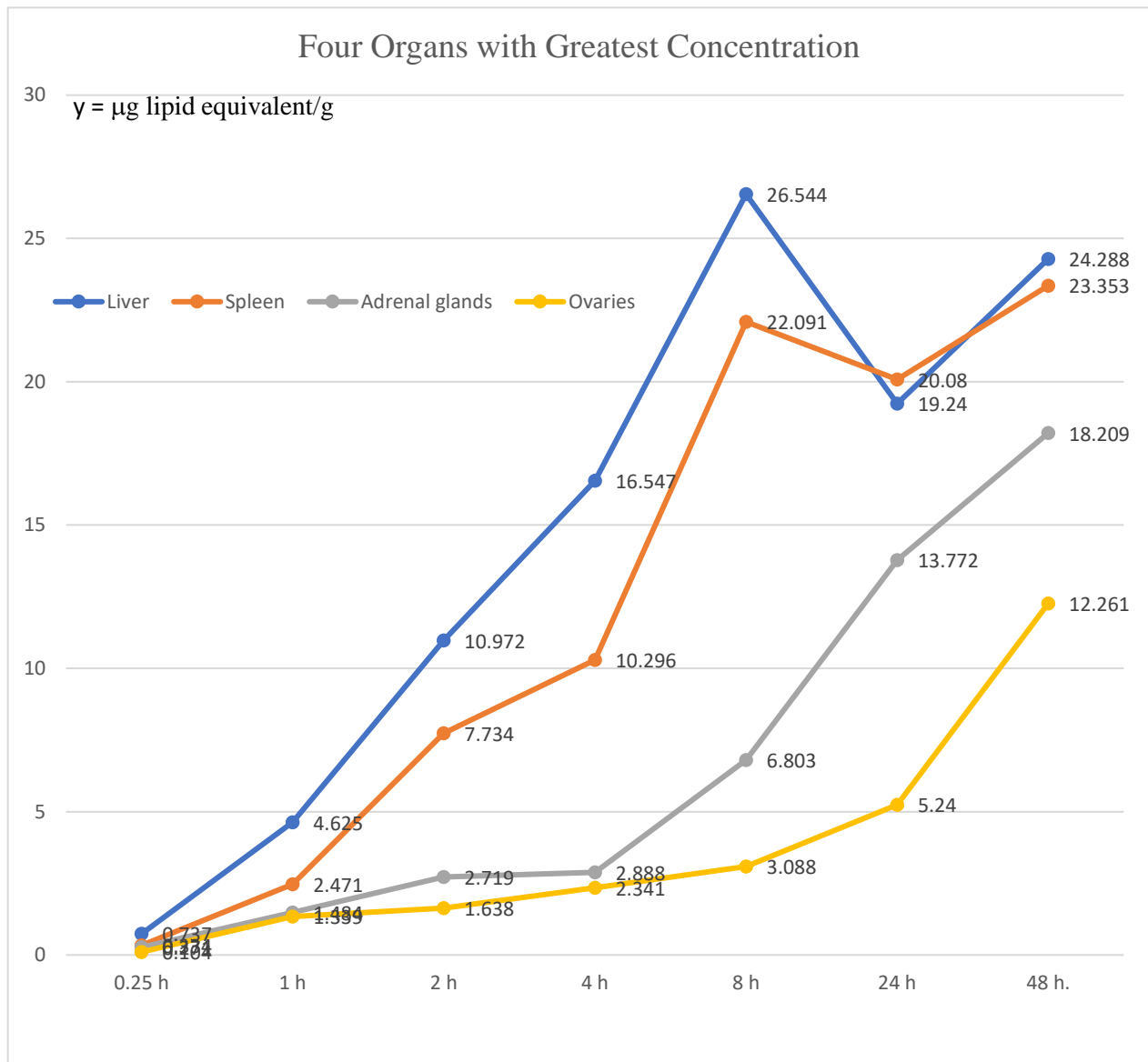


0.25 h	1 h	2 h	4 h	8 h	24 h	48 h.
0.064	0.189	0.29	0.408	0.534	0.554	0.727
0.05	0.146	0.53	0.489	0.689	0.985	1.366

Expressed as total lipid concentration (micrograms lipid equiv/g (mL))

Robert W. Chandler, MD, MBA

Mean Concentration and Recovery of Total Radioactivity in Whole Blood, Plasmas and Tissues Following Single IM Administration of [³H]-08-A01-C01 to Wistar Han Rats

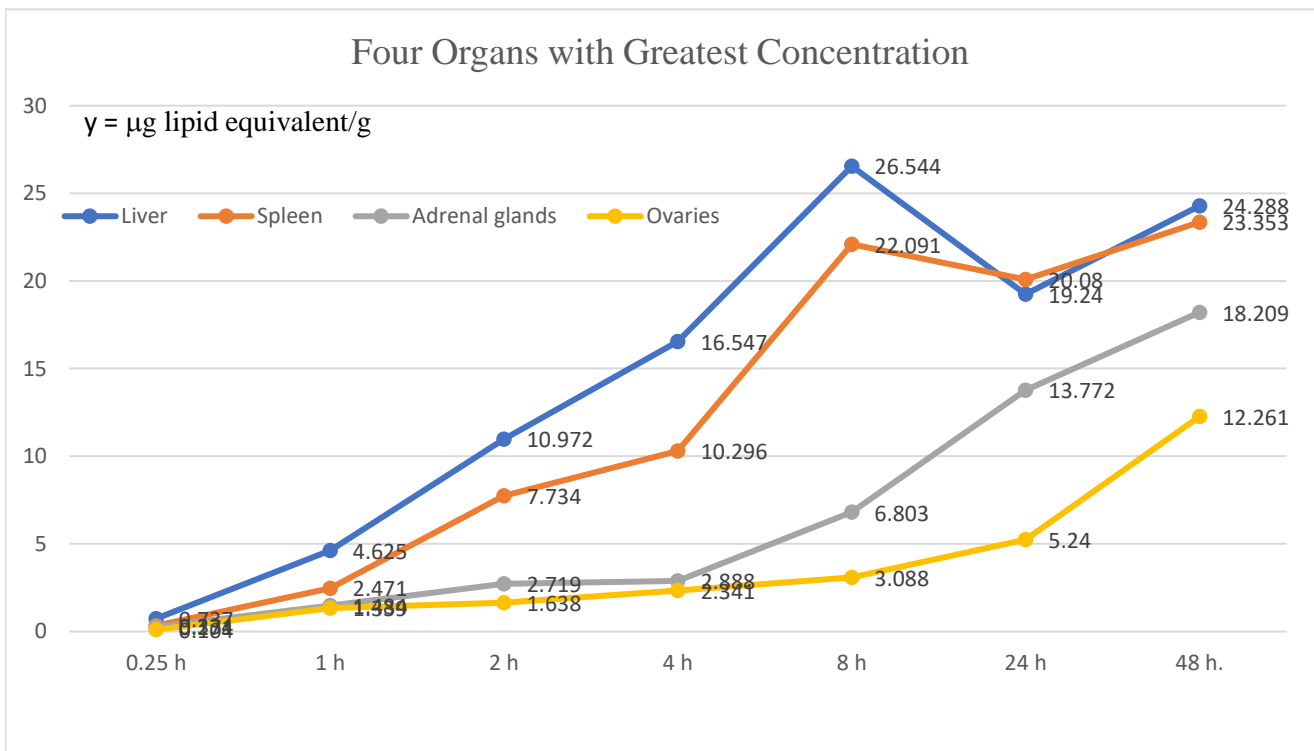
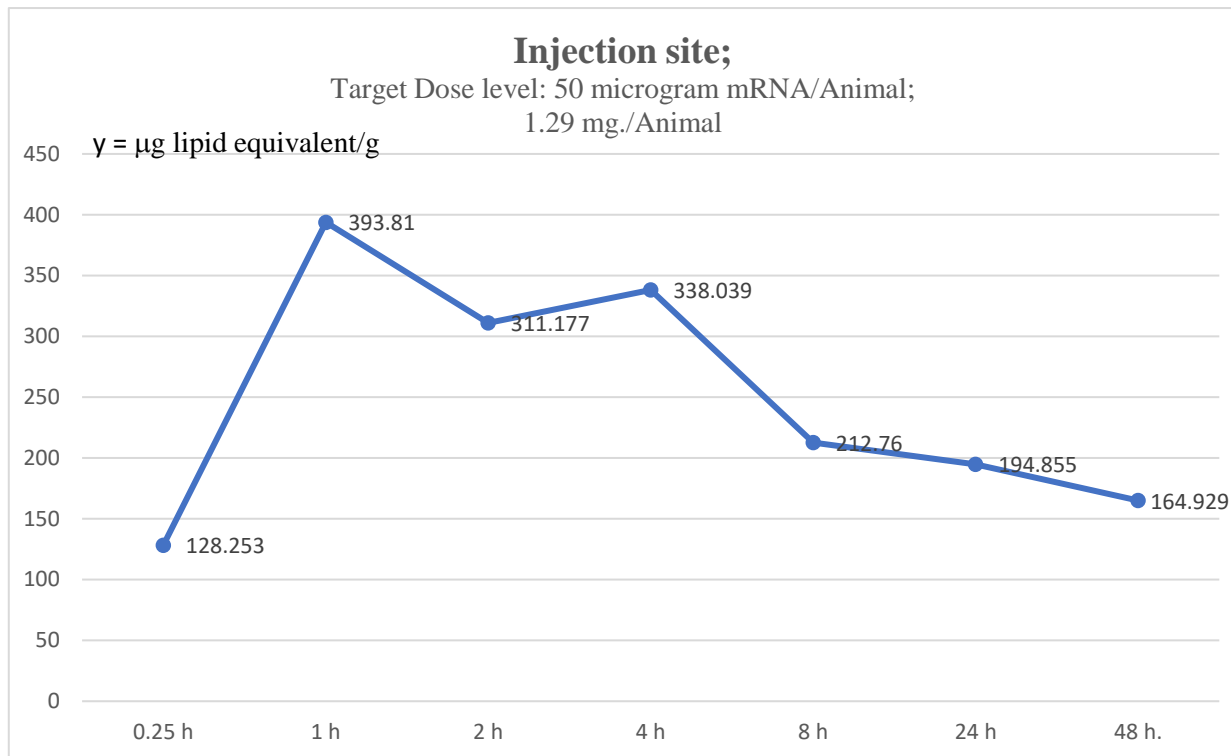


	0.25 h	1 h	2 h	4 h	8 h	24 h	48 h.
Liver	0.737	4.625	10.972	16.547	26.544	19.24	24.288
Spleen	0.334	2.471	7.734	10.296	22.091	20.08	23.353
Adrenal glands	0.271	1.484	2.719	2.888	6.803	13.772	18.209
Ovaries	0.104	1.339	1.638	2.341	3.088	5.24	12.261
Injection site	128.253	393.81	311.177	338.039	212.76	194.855	164.929

Expressed as total lipid concentration (microgms lipid equiv/g (mL))

Robert W. Chandler, MD, MBA

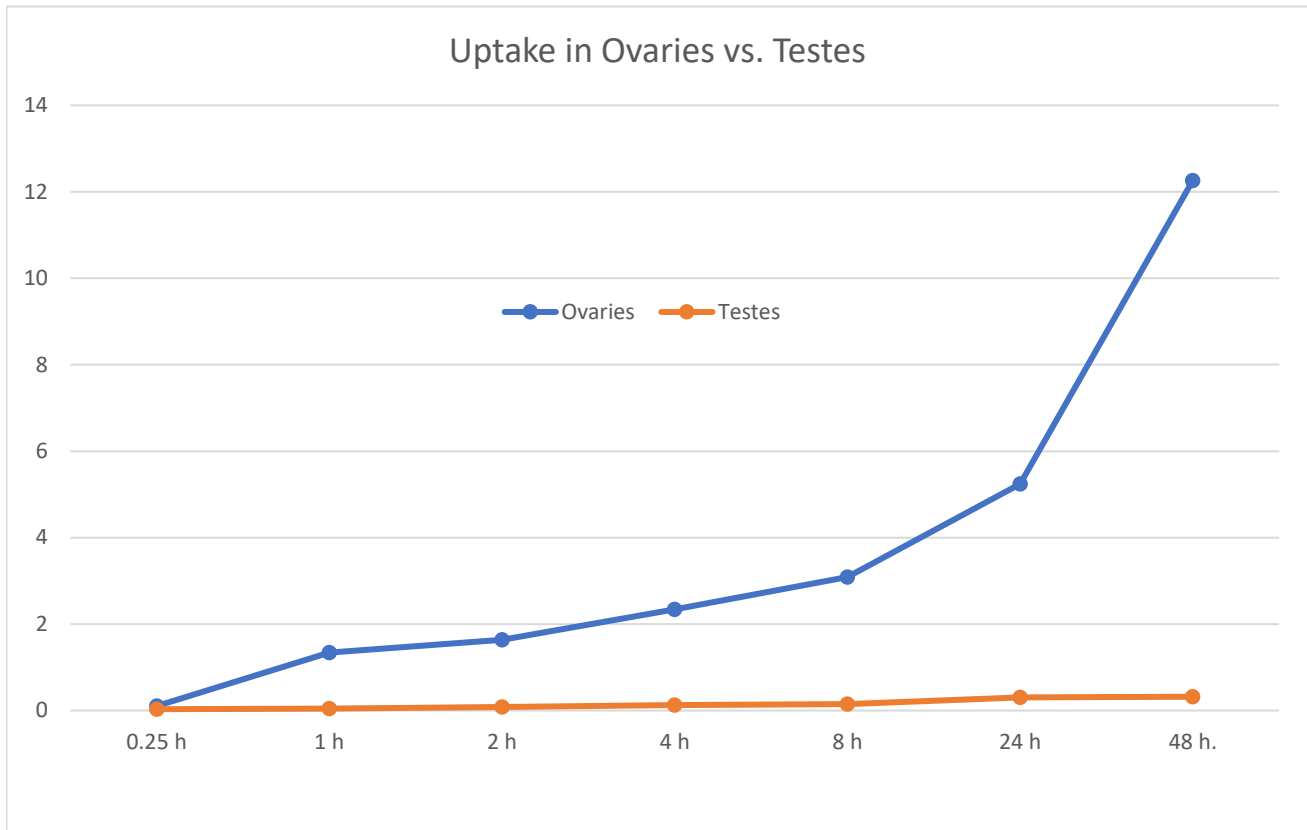
Mean Concentration and Recovery of Total Radioactivity in Whole Blood, Plasmas and Tissues Following Single IM Administration of [³H]-08-A01-C01 to Wistar Han Rats



Expressed as total lipid concentration (microgms lipid equiv/g (mL))

Robert W. Chandler, MD, MBA

Mean Concentration and Recovery of Total Radioactivity in Whole Blood, Plasmas and Tissues Following Single IM Administration of [³H]-08-A01-C01 to Wistar Han Rats



	0.25 h	1 h	2 h	4 h	8 h	24 h	48 h.
Ovaries	0.104	1.339	1.638	2.341	3.088	5.24	12.261
Testes	0.031	0.042	0.079	0.129	0.146	0.304	0.32

Expressed as total lipid concentration (microgms lipid equiv/g (mL))

Robert W. Chandler, MD, MBA